

DUYAR
POMPA



DWWP
WASTEWATER PUMPS



DWWP SS C 15 - 1,5-1,1 kw M



DWWP D 13 - 1 Kw M



DWWP C 50 - 200-3 kw T



DWWP GR 18 - 2-1,35 kw M



MORE DETAILS



DWWP GR 50 - 160-2,2 Kw T

DWWP D SERIES

Plastic Casing Drainage Wastewater Pumps Open Impeller Wastewater Pumps

Definition

- DWWP D SERIES pumps are manufactured at frequencies of 50 Hz and 60 Hz.
- DWWP D SERIES pumps are single-phase electric, easy to install, automatically operating, float submersible pumps.

Usage Areas

- These pumps, with open impeller made of Noryl material, are used in waterfalls, basements, ornamental pools, buildings, drainage pits and ponds up to a maximum height of 14 m, and they discharge particles not exceeding 3 mm without any problems.

Pump Features

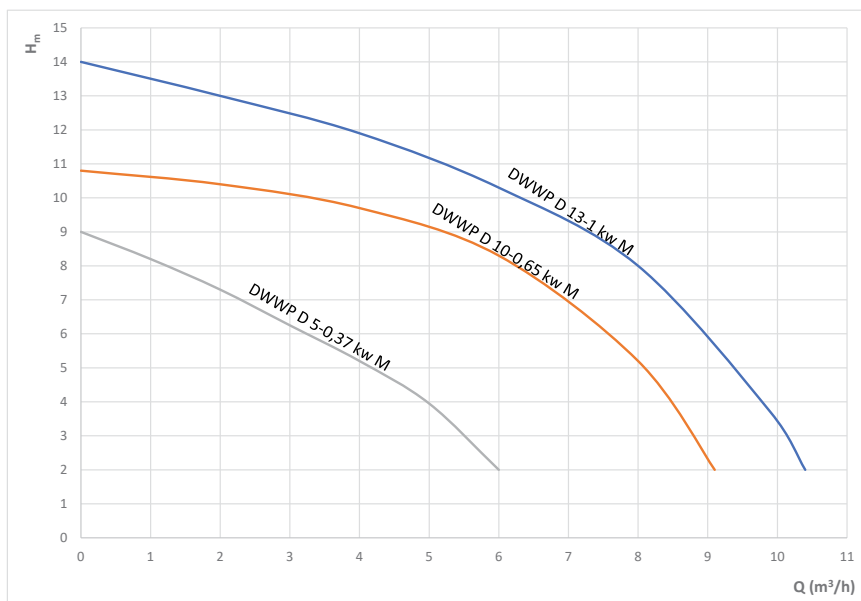
TYPE	PANEL	OPEN IMPELLER	CLOSED IMPELLER	BLADED	STAINLESS (AISI 304 INOX)	CAST IMPELLER (GG25)	NORYL IMPELLER	THERMAL PROTECTION
DWWP D 5-0,37 kw M		✓					✓	
DWWP D 10-0,65 kw M		✓					✓	✓
DWWP D 13-1 kw M		✓					✓	✓

Pump Material Properties

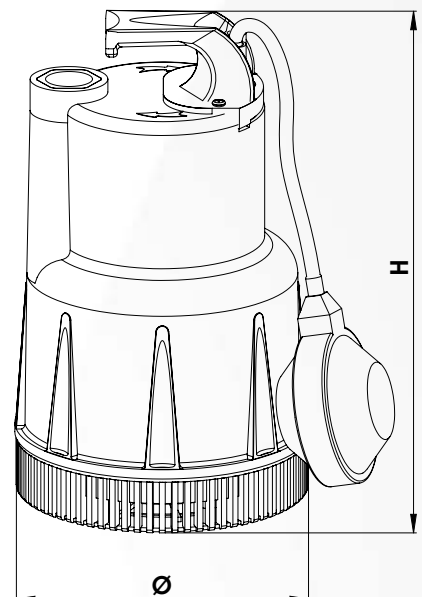
Pump Body	PPH
Impeller	Noryl
Shaft	AISI 304 INOX
Liquid Temperature	0 - 30 °C
Protection Class	IP 68
Insulation	Cl.F
Cable Length	10 m
Sealing	Mechanical Sealing

Pump Technical Specifications

TYPE	MOTOR								PUMP									
	KW	HP	V	Hz	A	rpm	CAPACITOR uf Vc		INPUT OUTPUT	Ø mm	H mm	KG	m³/h	1	3	5	7	10
DWWP D 5- 0,37 kw M	0.37	0.5	220	50	1.7	2900	10	450	1"	147	248	5.5	mss	8	6	4	-	-
DWWP D 10- 0,65 kw M	0.65	0.85	220	50	4.3	2900	20	450	1 1/4	180	326	12		10.5	10	9	7	-
DWWP D 13- 1 kw M	1	1.3	220	50	4.4	2900	25	450	1 1/4	180	326	13		13.5	12.5	11	9	4



* There is thermal protection in single-phase models against overloads.



DWWP SS SERIES

Complete Stainless Wastewater Pumps

Closed Impeller Wastewater Pumps

Definition

- DWWP D SERIES pumps are manufactured at frequencies of 50 Hz and 60 Hz.
- DWWP SS SERIES pumps are single-phase electric, easy-to-install, stainless body, automatically operating, float submersible pumps.

Usage Areas

- This type of pumps discharges particles not exceeding 6 mm without any problem. These pumps, which have a closed impeller made of AISI 304 INOX Stainless Steel material, are used in waterfalls, basements, ornamental pools, buildings, drainage pits and ponds up to a maximum height of 20 m.

Pump Features

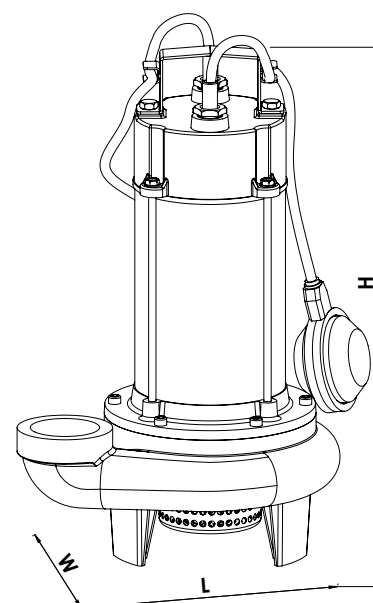
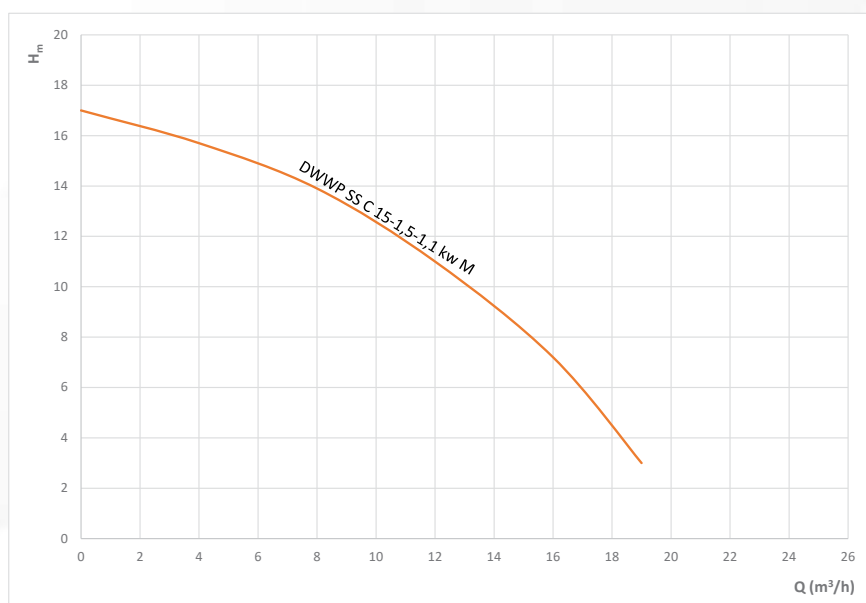
TYPE	PANEL	OPEN IMPELLER	CLOSED IMPELLER	BLADED	STAINLESS (AISI 304 INOX)	CAST IMPELLER (GG25)	NORYL IMPELLER
DWWP SS C 15-1,5-1.1 kw M	✓		✓		✓		

Pump Material Properties

Pump Body	INOX
Impeller	AISI 304 INOX
Shaft	AISI 304 INOX
Liquid Temperature	0 - 30 °C
Protection Class	IP 68
Insulation	Cl.F
Cable Length	10 m
Sealing	Mechanical Sealing

Pump Technical Specifications

TYPE	MOTOR								PUMP											
	KW	HP	V	Hz	A	rpm	CAPACITOR uf Vc		INPUT OUTPUT	W mm	L mm	H mm	KG	m³/h	3	8	12	16	20	
DWWP SS C 15-1,5-1.1 kw M	1.1	1.5	220	50	6.2	2900	25	450	1 1/2	185	260	350	20.5	mss	165	14	11	7.5	-	



* There is thermal protection in single-phase models against overloads.

DWWP D SERIES

Stainless Impeller Wastewater Pumps

Open Impeller Wastewater Pump

Definition

- DWWP D 15 - 1.1 kW M type pumps are manufactured at frequencies of 50 Hz and 60 Hz.
- This type of pumps are single-phase electric, automatic portable, submersible pumps operating in polluted waters.

Usage Areas

- This type of pumps are used in the discharge of sewage waters up to a maximum height of 12 m, sewage water with particles not exceeding 20 mm, industrial and domestic wastes, rainwater. It is also used in small diameter waterfalls for ornamental purposes..

Pump Features

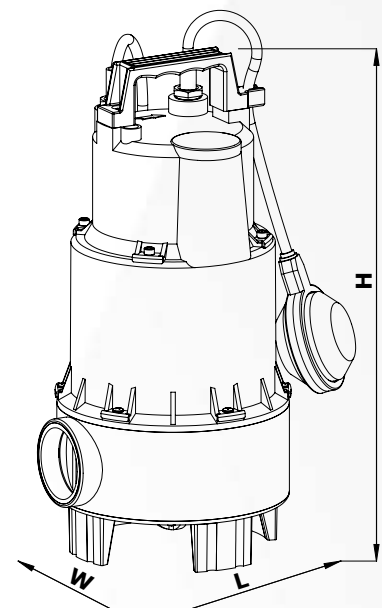
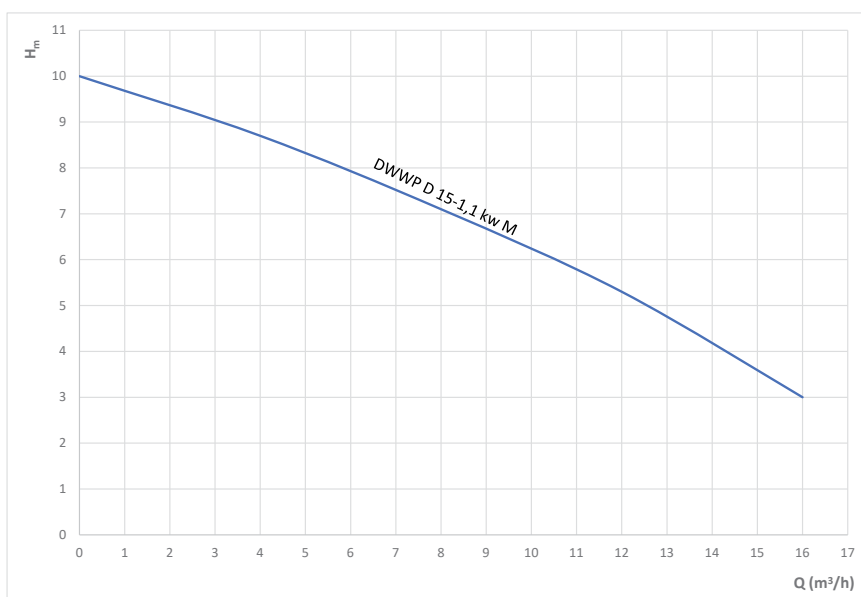
TYPE	PANEL	OPEN IMPELLER	CLOSED IMPELLER	BLADED	STAINLESS (AISI 304 INOX)	CAST IMPELLER (GG25)	NORYL IMPELLER	THERMAL PROTECTION
DWWP D 15-1,1 kW M		✓			✓			✓

Pump Material Properties

Pump Body	PPH
Impeller	AISI 304 INOX
Shaft	AISI 304 INOX
Liquid Temperature	0 - 30 °C
Protection Class	IP 68
Insulation	Cl.F
Cable Length	10 m
Sealing	Mechanical Sealing

Pump Technical Specifications

TYPE	MOTOR							PUMP										
	KW	HP	V	Hz	A	rpm	CAPACITOR uf Vc	INPUT OUTPUT	W mm	L mm	H mm	KG	m³/h	3	6	9	11	16
DWWP D 15- 1,1 kW M	1.1	1.5	220	50	5.2	2900	25 450	2"	185	195	400	13.5	mss	9	8	7	6	3



* There is thermal protection in single-phase models against overloads.

DWWP D SERIES

DWWP D 18-2-Y-1,35 kw M Type Pumps

Open Impeller Wastewater Pump

Definition

- DWWP D 18-2-Y-1,35 kw M type pumps are manufactured at frequencies of 50 Hz and 60 Hz.
- This type of pumps are single-phase electric, easy to install, stainless body, automatic running, float submersible pumps.

Usage Areas

- These pumps, with open impeller made of cast iron material, are used in waterfalls, basements, ornamental pools, buildings, drainage pits and debris up to a maximum height of 20 m, and they discharge particles not exceeding 6 mm without any problems.

Pump Features

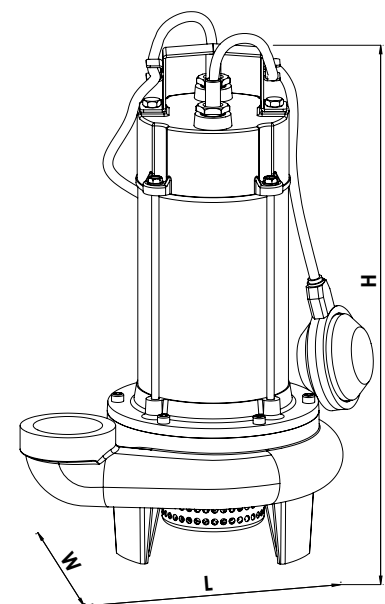
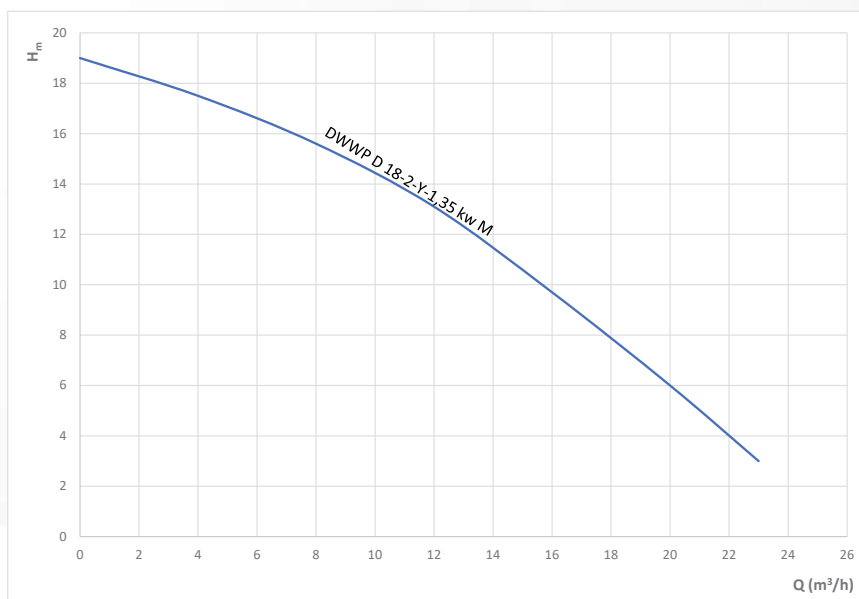
TYPE	PANEL	OPEN IMPELLER	CLOSED IMPELLER	BLADED	STAINLESS (AISI 304 INOX)	CAST IMPELLER (GG25)	NORYL IMPELLER
DWWP D 18-2-Y-1,35 kw M	✓	✓				✓	

Pump Material Properties

Pump Body	PPH
Impeller	GG 25
Shaft	AISI 304 INOX
Liquid Temperature	0 - 30 °C
Protection Class	IP 68
Insulation	Cl.F
Cable Length	10 m
Sealing	Mechanical Sealing

Pump Technical Specifications

TYPE	MOTOR								PUMP										
	KW	HP	V	Hz	A	rpm	CAPACITOR uf Vc		INPUT OUTPUT	W mm	L mm	H mm	KG	m³/h	3	8	12	16	20
DWWP D 18-2-Y- 1,35 kw M	1.35	1.8	220	50	6.5	2900	30	450	2"	200	280	430	23	mss	18	16	13	10	6



* There is thermal protection in single-phase models against overloads.

DWWP GR SERIES

Stainless Body Pumps with Shredder Blades Wastewater Pump with Shredder Blades

Definition

- Stainless body pump type is manufactured at frequencies of 50 Hz and 60 Hz.
- This type of pumps are single-phase electric, bladed, easy to install, automatic, submersible septic pumps in which a panel is not required.
- They are cast body, three-phase electric, bladed, septic submersible pumps.

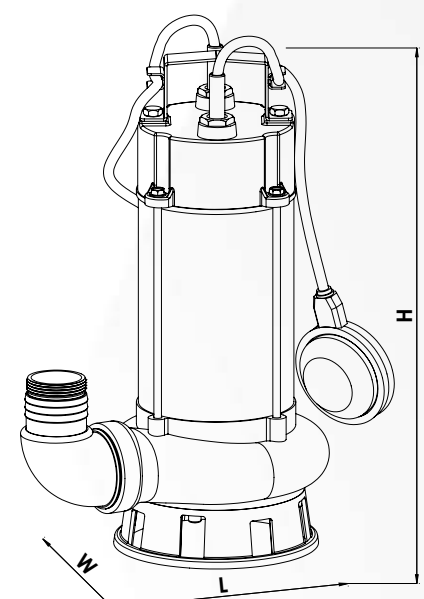
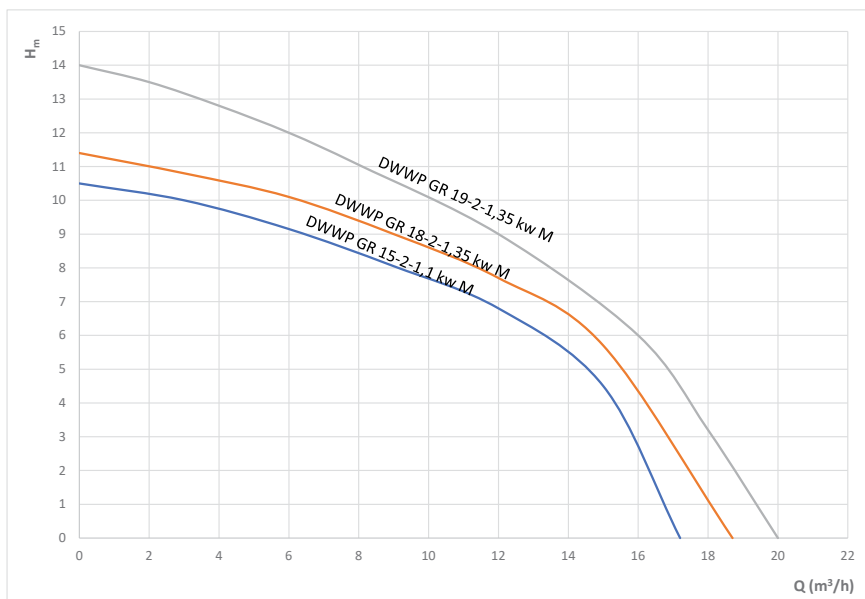
Usage Areas

- This type of pumps can evacuate the fibrous and not very solid particles in the water without any problems by breaking up due to the blades they contain, up to a maximum height of 14 m. Due to its stainless body, it is used in industry, hotels, construction sector and in sewage systems and treatment plants of residential areas.

Pump Features							
TYPE	PANEL	OPEN IMPELLER	CLOSED IMPELLER	BLADED	STAINLESS (AISI 304 INOX)	CAST IMPELLER (GG25)	NORYL IMPELLER
DWWP GR 15-2-1,1 kw M	✓	✓		✓		✓	
DWWP GR 18-2-1,35 kw M	✓	✓		✓		✓	
DWWP GR 19-2-1,35 kw M	✓	✓		✓		✓	

Pump Technical Specifications																		
TYPE	MOTOR								PUMP									
	KW	HP	V	Hz	A	rpm	CAPACITOR uf Vc	OUTPUT	W mm	L mm	H mm	KG	m³/h	6	9	12	18	24
DWWP GR 15-2- 1,1 kw M	1.1	1.5	220	50	5.8	2900	30 450	2"	200	280	380	22.5	mss	9	8	7	-	-
DWWP GR 18-2- 1,35 kw M	1.35	1.8	220	50	6.3	2900	30 450	2"	200	280	380	23		10	9	8	2	-
DWWP GR 19-2- 1,35 kw M	1.35	1.8	220	50	6.4	2900	30 450	2"	200	280	380	23		135	125	11	8.5	5

Pump Material Properties	
Pump Body	AISI 304 INOX
Impeller	GG 25
Shaft	AISI 304 INOX
Liquid Temperature	0 - 30 °C
Protection Class	IP 68
Insulation	Cl.F
Cable Length	10 m
Blade	AISI 420 INOX
Sealing	Mechanical Sealing



* There is thermal protection in single-phase models against overloads.

DWWP C SERIES

Cast Body Wastewater Pumps

Closed Impeller Wastewater Pumps

Definition

- These are three-phase centrifugal submersible wastewater pumps with cast body, 2900 RPM, outlet diameter DN 50, closed impeller. In this type of pumps, closed bearings with grease are used.

Usage Areas

- It is used in processes with domestic and industrial raw wastewater and liquids containing solid and fibrous parts.
- Solid matter permeability is 25 mm.

Pump Features

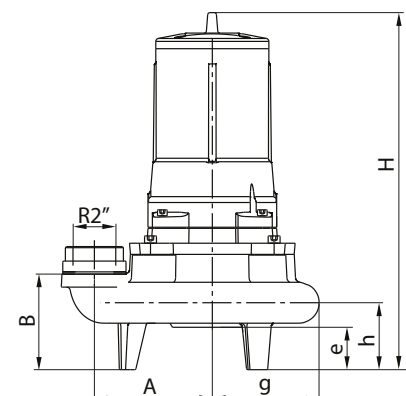
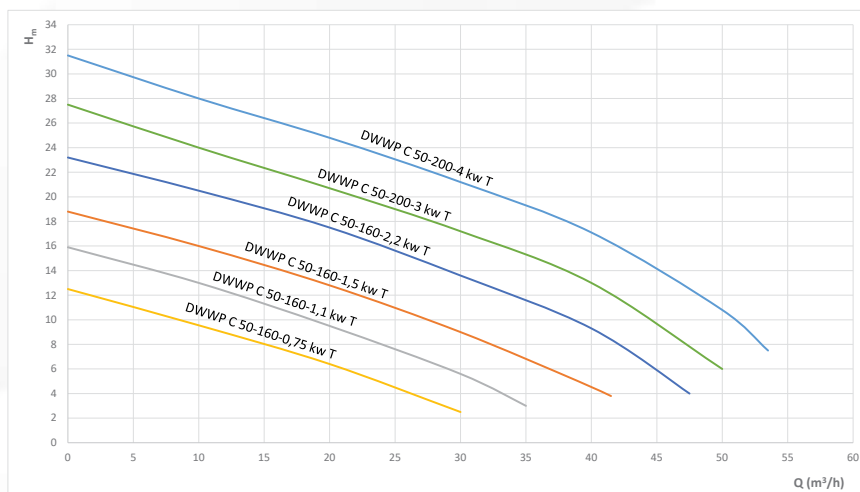
TYPE	PANEL	OPEN IMPELLER	CLOSED IMPELLER	BLADED	STAINLESS (AISI 304 INOX)	CAST IMPELLER (GG25)	NORYL IMPELLER
DWWP C 50-160-0,75 kw T			✓			✓	
DWWP C 50-160-1,1 kw T			✓			✓	
DWWP C 50-160-1,5 kw T			✓			✓	
DWWP C 50-160-2,2 kw T			✓			✓	
DWWP C 50-200-3 kw T			✓			✓	
DWWP C 50-200-4 kw T			✓			✓	

Pump Material Properties

Pump Body	GG 25
Impeller	GG 25
Shaft	Stainless Steel
Liquid Temperature	0 – 40 °C
Protection Class	IP 68
Sealing	Mechanical Sealing

Pump Technical Specifications

TYPE	MOTOR						PUMP				
	KW	HP	V	Hz		rpm	OUTPUT	W mm	L mm	H mm	KG
DWWP C 50-160-0,75 kw T	0,75	1	380	50		2900	2"	300	300	430	32
DWWP C 50-160-1,1 kw T	1,1	1,5	380	50		2900	2"	300	300	430	34
DWWP C 50-160-1,5 kw T	1,5	2	380	50		2900	2"	300	300	475	39
DWWP C 50-160-2,2 kw T	2,2	3	380	50		2900	2"	300	300	475	41
DWWP C 50-200-3 kw T	3	4	380	50		2900	2"	350	350	524	
DWWP C 50-200-4 kw T	4	5,5	380	50		2900	2"	350	350	529	



* There is thermal protection in single-phase models against overloads.

DWWP C SERIES

Cast Body Wastewater Pumps

Closed Impeller Wastewater Pumps

Definition

- These are three-phase centrifugal submersible wastewater pumps with cast body, 2900 RPM, outlet diameter DN 80 and DN 100, closed impeller. In this type of pumps, closed bearings with grease are used.

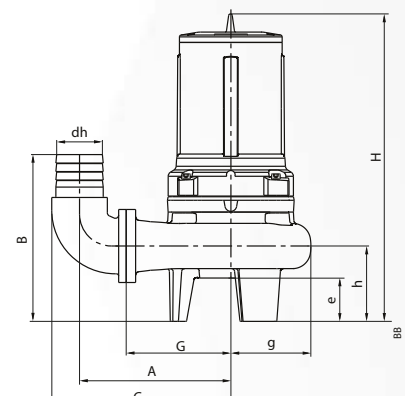
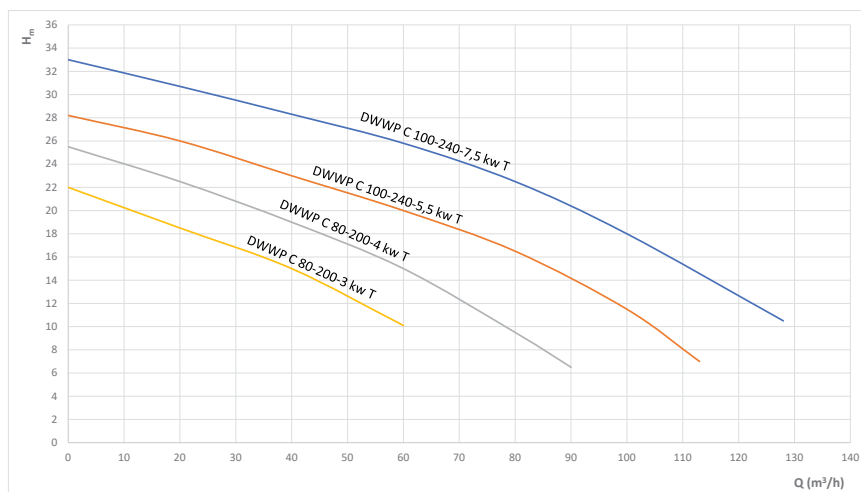
Usage Areas

- It is used in processes with domestic and industrial raw wastewater and liquids containing solid and fibrous parts.
- Solid matter permeability is 35 mm.

Pump Features							
TYPE	PANEL	OPEN IMPELLER	CLOSED IMPELLER	BLADED	STAINLESS (AISI 304 INOX)	CAST IMPELLER (GG25)	NORYL IMPELLER
DWWP C 80-200-3 kw T			✓			✓	
DWWP C 80-200-4 kw T			✓			✓	
DWWP C 100-240-5,5 kw T			✓			✓	
DWWP C 100-240-7,5 kw T			✓			✓	

Pump Material Properties	
Pump Body	GG 25
Impeller	GG 25
Shaft	Stainless Steel
Liquid Temperature	0 – 40 °C
Protection Class	IP 68
Sealing	Mechanical Sealing

Pump Technical Specifications											
TYPE	MOTOR						PUMP				
	KW	HP	V	Hz		rpm	OUTPUT	W mm	L mm	H mm	KG
DWWP C 80-200-3 kw T	3	4	380	50		2900	3"	350	315	573	59
DWWP C 80-200-4 kw T	4	5,5	380	50		2900	3"	350	325	578	65
DWWP C 100-240-5,5 kw T	5,5	7,5	380	50		2900	4"	395	375	657	94
DWWP C 100-240-7,5 kw T	7,5	10	380	50		2900	4"	395	375	657	103



* There is thermal protection in single-phase models against overloads.

DWWP C1 SERIES

Cast Body Wastewater Pumps

Closed Impeller Wastewater Pumps

Definition

- These are three-phase centrifugal submersible wastewater pumps with cast body, 1450 RPM, outlet diameter DN 50 and DN 80, closed impeller. In this type of pumps, closed bearings with grease are used.

Usage Areas

- It is used in processes with domestic and industrial raw wastewater and liquids containing solid and fibrous parts.
- Solid matter permeability is 25 mm.

Pump Features

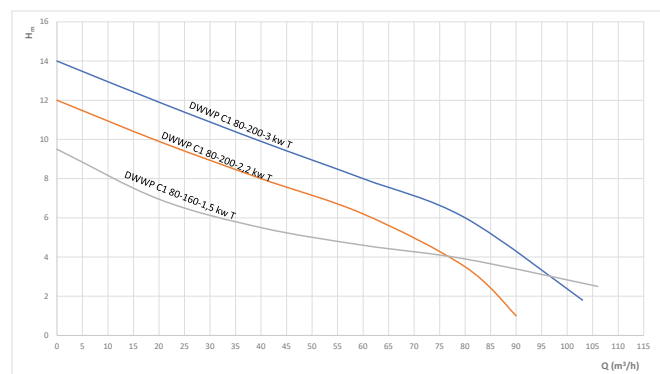
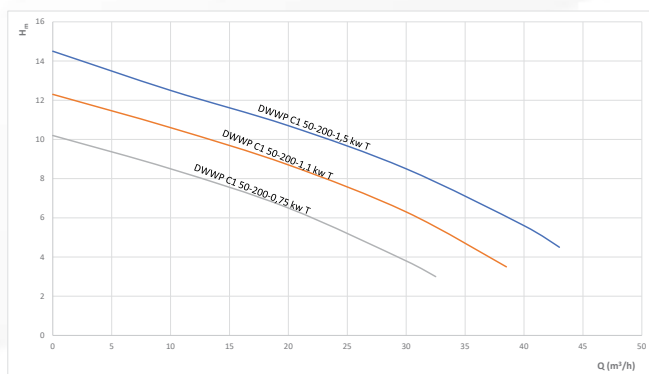
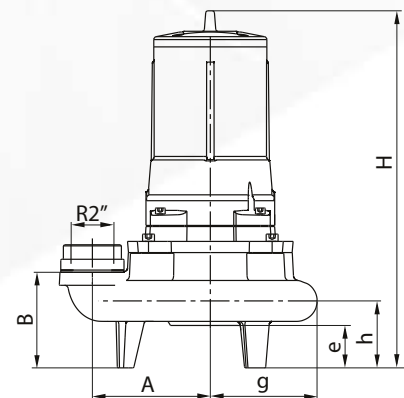
TYPE	PANEL	OPEN IMPELLER	CLOSED IMPELLER	BLADED	STAINLESS (AISI 304 INOX)	CAST IMPELLER (GG25)	NORYL IMPELLER
DWWP C1 50-200-0,75 kw T			✓			✓	
DWWP C1 50-200-1,1 kw T			✓			✓	
DWWP C1 50-200-1,5 kw T			✓			✓	
DWWP C1 80-160-1,5 kw T			✓			✓	
DWWP C1 80-200-2,2 kw T			✓			✓	
DWWP C1 80-200-3 kw T			✓			✓	

Pump Material Properties

Pump Body	GG 25
Impeller	GG 25
Shaft	Stainless Steel
Liquid Temperature	0 - 40 °C
Protection Class	IP 68
Sealing	Mechanical Sealing

Pump Technical Specifications

TYPE	MOTOR					PUMP				
	KW	HP	V	Hz	rpm	OUTPUT	W mm	L mm	H mm	KG
DWWP C1 50-200-0,75 kw T	0,75	1	380	50	1500	2"	350	280	438	
DWWP C1 50-200-1,1 kw T	1,1	1,5	380	50	1500	2"	350	290	483	
DWWP C1 50-200-1,5 kw T	1,5	2	380	50	1500	2"	350	290	483	
DWWP C1 80-160-1,5 kw T	1,5	2	380	50	1500	3"	310	284	540	58
DWWP C1 80-200-2,2 kw T	2,2	3	380	50	1500	3"	350	316	573	60
DWWP C1 80-200-3 kw T	3	4	380	50	1500	3"	350	316	573	64



* There is thermal protection in single-phase models against overloads.

DWWP C1 SERIES

Cast Body Wastewater Pumps

Closed Impeller Wastewater Pumps

Definition

- These are three-phase centrifugal submersible wastewater pumps with cast body, 1450 RPM, outlet diameter DN 100, closed impeller. In this type of pumps, closed bearings with grease are used.

Usage Areas

- It is used in processes with domestic and industrial raw wastewater and liquids containing solid and fibrous parts.
- Solid matter permeability is 55 mm.

Pump Features

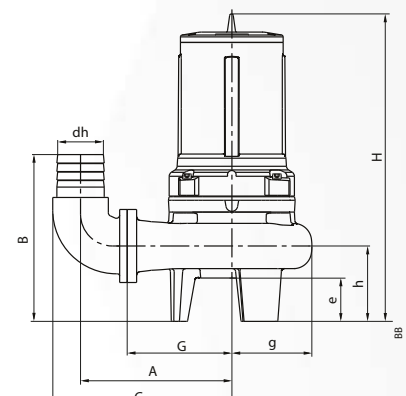
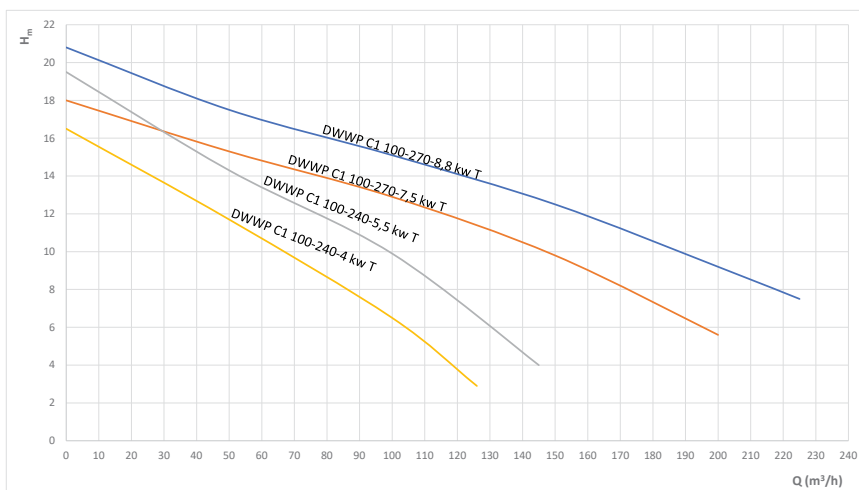
TYPE	PANEL	OPEN IMPELLER	CLOSED IMPELLER	BLADED	STAINLESS (AISI 304 INOX)	CAST IMPELLER (GG25)	NORYL IMPELLER
DWWP C1 100-240-4 kw T			✓			✓	
DWWP C1 100-240-5,5 kw T			✓			✓	
DWWP C1 100-270-7,5 kw T			✓			✓	
DWWP C1 100-270-8,8 kw T			✓			✓	

Pump Material Properties

Pump Body	GG 25
Impeller	GG 25
Shaft	Stainless Steel
Liquid Temperature	0 – 40 °C
Protection Class	IP 68
Sealing	Mechanical Sealing

Pump Technical Specifications

TYPE	MOTOR						PUMP				
	KW	HP	V	Hz		rpm	OUTPUT	W mm	L mm	H mm	KG
DWWP C1 100-240-4 kw T	4	5	380	50		1500	4"	345	395	908	82
DWWP C1 100-240-5,5 kw T	5,5	7,5	380	50		1500	4"	376	395	657	104
DWWP C1 100-270-7,5 kw T	7,5	10	380	50		1500	4"	426	470	678	126
DWWP C1 100-270-8,8 kw T	8,8	12	380	50		1500	3"	426	470	678	126



* There is thermal protection in single-phase models against overloads.

DWWP V SERIES

Cast Body Wastewater Pumps

Wastewater Pumps with Vortex Impeller

Definition

- These are three-phase centrifugal submersible wastewater pumps with cast body, 1450 RPM, outlet diameter DN 100 and DN 80, closed impeller. In this type of pumps, closed bearings with grease are used.

Usage Areas

- It is used in processes with domestic and industrial raw wastewater and liquids containing solid and fibrous parts.
- Solid matter permeability is 60 mm.

Pump Features

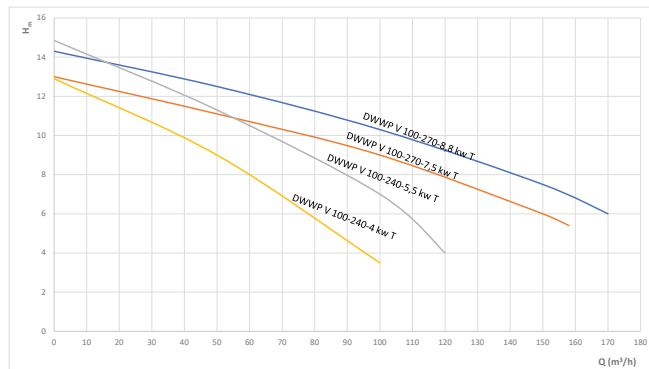
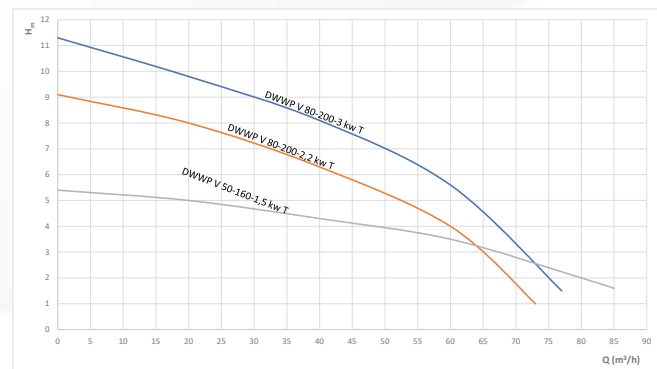
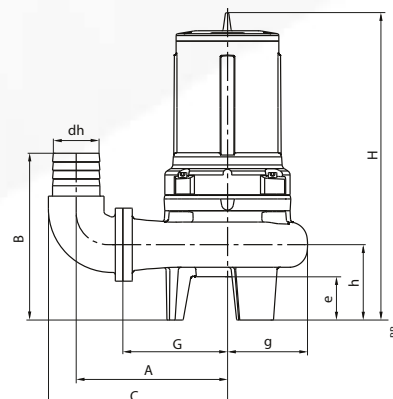
TYPE	PANEL	OPEN IMPELLER	VORTEX	CLOSED IMPELLER	BLADED	STAINLESS (AISI 304 INOX)	CAST IMPELLER (GG25)	NORYL IMPELLER
DWWP V 80-160-1,5 kw T			✓				✓	
DWWP V 80-200-2,2 kw T			✓				✓	
DWWP V 80-200-3 kw T			✓				✓	
DWWP V 100-240-4 kw T			✓				✓	
DWWP V 100-240-5,5 kw T			✓				✓	
DWWP V 100-270-7,5 kw T			✓				✓	
DWWP V 100-270-8,8 kw T			✓				✓	

Pump Material Properties

Pump Body	GG 25
Impeller	GG 25
Shaft	Stainless Steel
Liquid Temperature	0 – 40 °C
Protection Class	IP 68
Sealing	Mechanical Sealing

Pump Technical Specifications

TYPE	MOTOR						PUMP				
	KW	HP	V	Hz		rpm	OUTPUT	W mm	L mm	H mm	KG
DWWP V 80-160-1,5 kw T	1,5	2	380	50		1500	3"	310	284	540	58
DWWP V 80-200-2,2 kw T	2,2	3	380	50		1500	3"	350	316	573	58
DWWP V 80-200-3 kw T	3	4	380	50		1500	3"	350	316	573	62
DWWP V 100-240-4 kw T	4	5	380	50		1500	4"	395	347	608	80
DWWP V 100-240-5,5 kw T	5,5	7,5	380	50		1500	4"	395	375	657	101
DWWP V 100-270-7,5 kw T	7,5	10	380	50		1500	4"	425	470	678	123
DWWP V 100-270-8,8 kw T	8,8	12	380	50		1500	4"	425	470	678	123



* There is thermal protection in single-phase models against overloads.

DWWP V SERIES

Cast Body Wastewater Pumps

Wastewater Pumps with Vortex Impeller

Definition

- These are three-phase centrifugal submersible wastewater pumps with cast body, 1450 RPM, outlet diameter DN 50, closed impeller. In this type of pumps, closed bearings with grease are used.

Usage Areas

- It is used in processes with domestic and industrial raw wastewater and liquids containing solid and fibrous parts.
- Solid matter permeability is 35 mm.

Pump Features

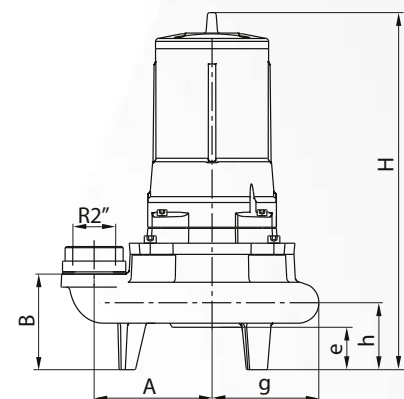
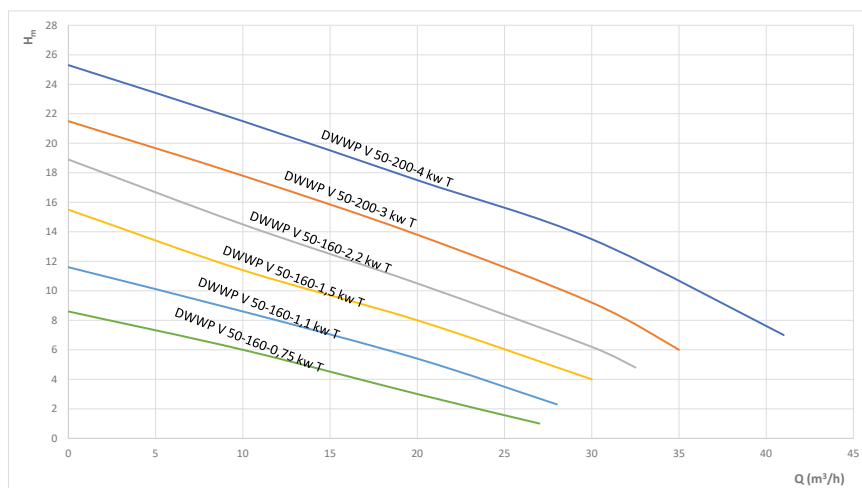
TYPE	PANEL	OPEN IMPELLER	VORTEX	CLOSED IMPELLER	BLADED	STAINLESS (AISI 304 INOX)	CAST IMPELLER (GG25)	NORYL IMPELLER
DWWP V 50-160-0,75 kw T			✓				✓	
DWWP V 50-160-1,1 kw T			✓				✓	
DWWP V 50-160-1,5 kw T			✓				✓	
DWWP V 50-160-2,2 kw T			✓				✓	
DWWP V 50-200-3 kw T			✓				✓	
DWWP V 50-200-4 kw T			✓				✓	

Pump Material Properties

Pump Body	GG 25
Impeller	GG 25
Shaft	Stainless Steel
Liquid Temperature	0 - 40 °C
Protection Class	IP 68
Sealing	Mechanical Sealing

Pump Technical Specifications

TYPE	MOTOR						PUMP				
	KW	HP	V	Hz		rpm	OUTPUT	W mm	L mm	H mm	KG
DWWP V 50-160-0,75 kw T	0,75	1	380	50		2900	2"	255	300	430	29
DWWP V 50-160-1,1 kw T	1,1	2	380	50		2900	2"	255	300	430	34
DWWP V 50-160-1,5 kw T	1,5	2	380	50		2900	2"	263	300	475	38
DWWP V 50-160-2,2 kw T	2,2	3	380	50		2900	2"	263	300	475	41
DWWP V 50-200-3 kw T	3	4	380	50		2900	2"	300	350	524	54
DWWP V 50-200-4 kw T	4	5	380	50		2900	2"	310	350	529	59



* There is thermal protection in single-phase models against overloads.

DWWP GR SERIES

Cast Body Wastewater Pumps

Wastewater Pumps with Grinder

Definition

- These are three-phase centrifugal submersible wastewater pumps with cast body, 2900 RPM, outlet diameter DN 50, shredder blades. In this type of pumps, closed bearings with grease are used.

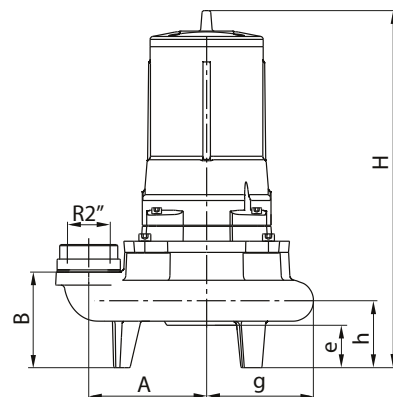
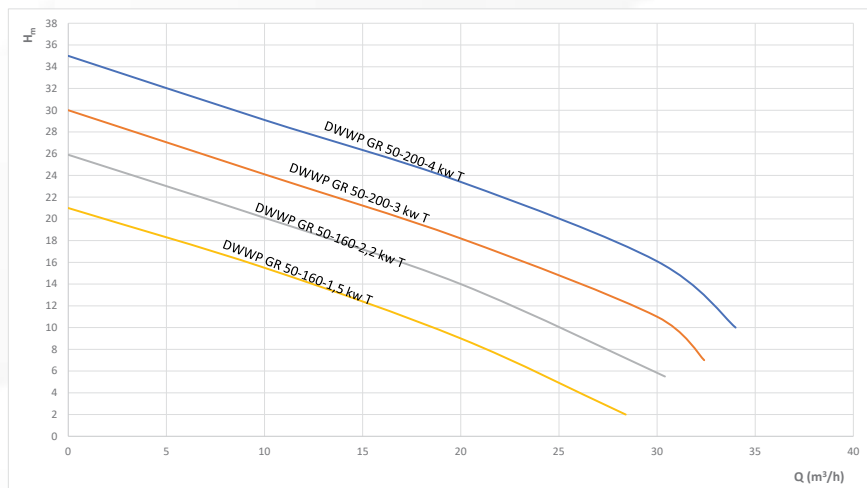
Usage Areas

- It is used in processes with domestic and industrial raw wastewater and liquids containing solid and fibrous parts.

Pump Features							
TYPE	PANEL	OPEN IMPELLER	CLOSED IMPELLER	BLADED	STAINLESS (AISI 304 INOX)	CAST IMPELLER (GG25)	NORYL IMPELLER
DWWP GR 50-160-1,5 kw T		✓		✓		✓	
DWWP GR 50-160-2,2 kw T		✓		✓		✓	
DWWP GR 50-200-3 kw T		✓		✓		✓	
DWWP GR 50-200-4 kw T		✓		✓		✓	

Pump Material Properties	
Pump Body	GG 25
Impeller	GG 25
Shaft	Stainless Steel
Blade	Stainless Steel
Liquid Temperature	0 - 40 °C
Protection Class	IP 68
Sealing	Mechanical Sealing

Pump Technical Specifications											
TYPE	MOTOR						PUMP				
	KW	HP	V	Hz		rpm	OUTPUT	W mm	L mm	H mm	KG
DWWP GR 50-160-1,5 kw T	1,5	2	380	50		2900	2"	300	263	457	38
DWWP GR 50-160-2,2 kw T	2,2	3	380	50		2900	2"	300	263	457	40
DWWP GR 50-200-3 kw T	3	4	380	50		2900	2"	350	287	496	52
DWWP GR 50-200-4 kw T	4	5	380	50		2900	2"	350	290	501	58



* There is thermal protection in single-phase models against overloads.

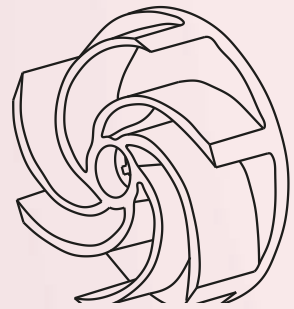
WASTEWATER PUMPS

MODEL	CONNECTION	Rpm
DWWP D 5-0,37 kw M	DN 25	2.900
DWWP D 10-0,65 Kw M	DN 32	2.900
DWWP D 13-1 kw M	DN 32	2.900
DWWP D 15-1,1 kw M	DN 50	2.900
DWWP D 18-2-Y-1,35 kw M	DN 50	2.900
DWWP SS C 15-1,5 -1,1 kw M	DN 40	2.900
DWWP C 50-160-0,75 kw T	DN 50	2.900
DWWP C 50-160-1,1 kw T	DN 50	2.900
DWWP C 50-160-1,5 kw T	DN 50	2.900
DWWP C 50-160 -2,2 kw T	DN 50	2.900
DWWP C 50-200 -3 kw T	DN 50	2.900
DWWP C 50-200 -4 kw T	DN 50	2.900
DWWP C 80-200-3 kw T	DN 80	2.900
DWWP C 80-200-4 kw T	DN 80	2.900
DWWP C 100-240 -5,5 kw T	DN 100	2.900
DWWP C 100-240 -7,5 kw T	DN 100	2.900
DWWP C1 50-200- 0,75 kw T	DN 50	1.450
DWWP C1 50-200- 1,1 kw T	DN 50	1.450
DWWP C1 50-200 -1,5 kw T	DN 50	1.450
DWWP C1 80-160 -1,5 kw T	DN 80	1.450
DWWP C1 80-200,2,2 kw T	DN 80	1.450
DWWP C1 80-200-3 kw T	DN 80	1.450
DWWP C1 100-240-4 kw T	DN 100	1.450
DWWP C1 100-240-5,5 kw T	DN 100	1.450
DWWP C1 100-270-7,5 kw T	DN 100	1.450
DWWP C1 100-270-8,8 kw T	DN 100	1.450
DWWP V 50-160 -0,75 kw T	DN 50	2.900
DWWP V 50-160 -1,1 kw T	DN 50	2.900
DWWP V 50-160 -1,5 kw T	DN 50	2.900
DWWP V 50-160 -2,2 kw T	DN 50	2.900
DWWP V 50-200 -3 kw T	DN 50	2.900
DWWP V 50-200 -4 kw T	DN 50	2.900
DWWP V 80-160-1,5 kw T	DN 80	1.450
DWWP V 80-200- 2,2 kw T	DN 80	1.450
DWWP V 80-200- 3 kw T	DN 80	1.450
DWWP V 100-240-4 kw T	DN 100	1.450
DWWP V 100-240-5,5 kw T	DN 100	1.450
DWWP V 100-270-7,5 kw T	DN 100	1.450
DWWP V 100-270-8,8 kw T	DN 100	1.450
DWWP GR 15-2-1,1kw M	DN 50	2.900
DWWP GR 18-2-1,35 kw M	DN 50	2.900
DWWP GR 19-2-1,35 kw M	DN 50	2.900
DWWP GR 50-160-1,5 kw T	DN 50	2.900
DWWP GR 50-160-2,2 kw T	DN 50	2.900
DWWP GR 50-200-3 kw T	DN 50	2.900
DWWP GR 50-200-4 kw T	DN 50	2.900

IMPELLER TYPES

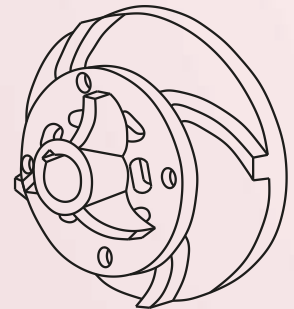
V Type Impeller (Vortex)

Semi-open type free vortex impellers are located at a certain distance from the scroll suction port. It creates a forced vortex motion inside the scroll, and in this way it can pass solid particles. They are generally used for fibrous liquids. It is suitable for low pump heads, but the overall pump efficiency is considerably lower than previous types. For some models, embedded type impeller application can be made. With this type of design, permeability of solid particles in the diameter of the pump mouth can be achieved.



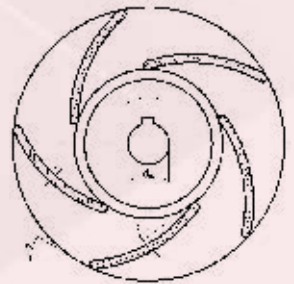
GR Type Impeller (With Grinder Blade)

It is a semi-open impeller type pump with shredder blades. Hard and Stainless material shredder blade system in front of the pump impeller reduces the size of the soft solid particles in the liquid to dimensions that do not clog the pipe. The impeller of the pump is of the semi-open type. It is suitable for small flow and high pressure systems, but pump efficiencies are generally low.



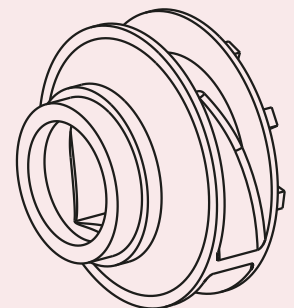
D Type Impeller (Open Impeller)

Open impeller water pumps are suitable for drip and flood irrigation up to a maximum height of 22 m and for lightly contaminated slab water removal.



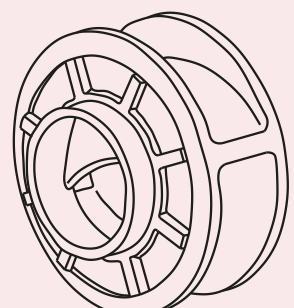
Type C Impeller (Closed Impeller)

They are closed type impellers and are suitable for use with 2900 rpm motor pumps. Solid particle sizes are smaller, pressures are higher and flow rates are relatively smaller.



C1 Type Impeller (Closed Impeller)

They are closed type impellers with large channels, large flow, small pressure, which can pass large-sized solid particles without clogging. It is used in pumps with a motor speed of 1450 rpm.





WE ARE **SENSITIVE TO LIFE**

02.2024